

encapsulite

ILLUMINATING BY DESIGN





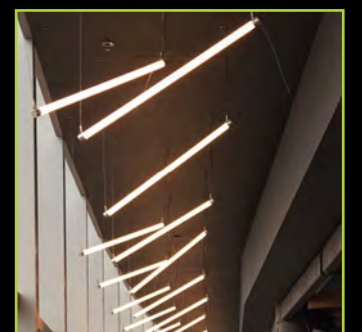
Encapsulite have been designers, manufacturers and suppliers of professional lighting systems since 1968.

We are well known throughout the world and provide a comprehensive range of professional lighting for architectural, commercial, industrial, media and retail sectors. We excel at accommodating our customers and their project requirements. We can change any of our lighting products to suit your specification. We have a carefully selected distributor network extending globally that enables us to service international projects locally.

Encapsulite will always use the most up to date and top-quality components available to produce our lighting products.

As a company we continually move forward with new technology and product design, to fulfil the requirements of our customers, combined with a flexible approach and a service to match. Encapsulite will endeavour to go the extra mile for our customers in a bid to meet and exceed customers' expectations.

Please ask if we can change/modify or design a bespoke fitting for your project. We are happy to supply samples free of charge to Lighting Designers and Architects.



SALES SUPPORT

- Dedicated team of sales representatives covering the UK & Europe.
- Quotations on projects are always completed within 24hrs if not same day.
- Encapsulite professionals are always available to answer any questions you may have.



TECHNICAL SUPPORT

- Whether you need information on a wiring diagram, dimming capabilities or you have a general technical enquiry Encapsulites technical specialists are here to help.
- If you don't see what you are looking for, please ask we pride ourselves on delivering bespoke lighting solutions.



IN HOUSE PRODUCTION

- UK Manufacturing is at the heart of Encapsulite International.
- All products go through intense quality control testing.
- Ongoing investment in people, production facilities and product development ensures our products continue to be market leading.



STOCK AVAILABILITY & DELIVERY

- We hold a large amount of component stock that allows a fast turn around.
- The warehouse and distribution centre offers next day delivery service and a same day collection service where possible.
- Bespoke projects will have a slightly longer lead time.



HFI LED Stick-Lite Integral Driver	6
MT360 LED Remote Driver	8
Bubble Wafer Remote Driver	10
Bubble Wafer 2 Integral Driver	12
MT70 LED AC Integral Driver	16
MT70 LED AC2 Integral Driver	18
AC70 LED Remote Driver	20
MT70 LED Elipse Integral Driver	22
MT70 LED IP67 Integral Driver	24
MT50 LED AC Integral Driver	30
MT50 LED AC2 Integral Driver	32
MT50 LED IP67 Integral Driver	34
MT50 IP67 Integral ECG	36
MTIK10 LED IP67 Integral Driver	38
Colour Changing Products	42
MT360 RGB Remote Driver	44
RGB30 Stick-Lite Remote Driver	46
RGB70 AC Remote Driver	48
24V RD Twin Stick LED Remote Driver	50
24V RD Twin Stick IP64 Remote Driver	52
AP LED RD Remote Driver	56
AP LED ID Integral Driver	58
T8 HFI Stick-Lite Integral ECG	64
T5 HFI Stick-Lite Integral ECG	66

HFI LED STICK-LITE INTEGRAL DRIVER



Suspended/Surface mounted.

A ROBUST LED FITTING WITH ITS DRIVER INCORPORATED WITHIN THE GLANDED END CAP.

The slim fitting offers 360° of light distribution and seamlessly incorporates many colours with the use of our coloured sleeves. Simply unscrew the blank end cap, slide the sleeve over the top and replace. The LED Stick-Lite is an incredibly versatile linear lighting solution and will run 240V AC. The LED Stick-Lite makes use of high-quality LED's. Widely used for window displays, lighting features and within the TV and theatre industry.

Light Source Information

- LED, Integral Driver.
- Available in 3000K & 4000K.

Options

White or black end caps.
UK or Euro plug available.

Dimming

Not available with this product.

Installation

Horizontal, angled suspension, surface mounted or vertical with its own cable.

3 metres of cable. More cable colours available on request. Longer cable with no plug available at an extra charge.

Optics

Polycarbonate Satin Diffuser. Can be used with DDP colours light red, light orange, ice blue, sky blue, chrome green, candy pink, pink & candlelight. Larger selection of colours available with our COS sleeves.



Suspension Kit



DDP Coloured Sleeves



Mounting Clips

Part No.	Length (mm)	Illuminated Length (mm)	Lumens	Circuit Power (W)
HFI LED 5	590	470	1250	11
HFI LED 10	1100	980	1885	16
HFI LED 15	1575	1460	2600	21



MT360 LED REMOTE DRIVER



Suspended. Cylindrical diffused LED light, with true 360° output of light.

THE MT360 IS A NEW DESIGNED CYLINDRICAL LED FITTING.

This light gives you the ability to create lighting designs and beautiful features. This can be suspended horizontally or vertically. The distribution of light is 360° through its polycarbonate satin diffuser.

The light makes use of efficient LED technology offering switched or DALI dimming options for a controllable level of light output.

Widely used in the Theatre, TV, retail, events companies and entertainment industries.

Light Source Information

- 24V LED Remote Driver.
- Available in 2700K, 3000K & 4000K.

Options

- Injection moulded end caps in white or black as standard, other colours available.
- Ceiling rose available in other colours.

Dimming

1-10V or Dali.

Installation

Horizontal, vertical and angled suspension.

Optics

Satin polycarbonate diffuser.

Drivers Available

30W, 75W, 100W/Dali, 100W 1-10V and 60W Leading/trailing edge

Cat No.	Length (mm)	Lumens	Circuit Power (W)
HIGH EFFICIENCY			
MT360 LED 5 HE	525	500	10
MT360 LED 10 HE	1025	1105	19
MT360 LED 15 HE	1525	1750	29
HIGH OUTPUT			
MT360 LED 5 HO	525	905	15
MT360 LED 10 HO	1025	1825	29
MT360 LED 15 HO	1525	2740	44

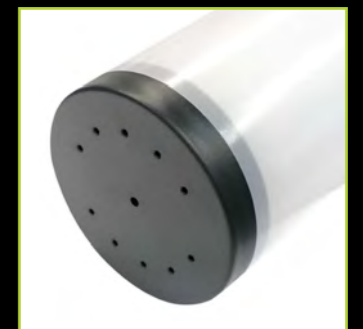
Length	Wired back to Driver
525	X8
1025	X5
1525	X3



Ceiling Rose Fitting



Suspension Kit



Black End Cap



Tube ø 70mm



Cap ø 70mm



Light output 360°

BUBBLE WAFER

REMOTE DRIVER



LG7, UGR 19 compliant.

SUSPENDED UP AND DOWN LIGHT WITH A REMOTE DRIVER THAT CAN BE UP TO 10M AWAY.

The 24V LED diffused lit Bubble Wafer is slim, robust and can be suspended horizontally or angled.

The Suspended Linear LED Light has both direct / indirect illumination. Ideal for suspension in offices, public open spaces and retail. Finished in a choice of colours black or stylish silver aluminium housing, utilising a frosted diffuser for subtle light output suiting a wide range of modern commercial interiors. This fitting runs on a 24V constant voltage driver that can be Dali dimmable.

Light Source Information

- LED Remote Driver.
- Available in 2700K, 3000K & 4000K.

Dimming

Dali.

Installation

Suspended horizontally.

Optics

PMMA diffuser, Clear, Matt or Satin available.



Direct & Indirect Light



Suspension Kit

Cat No.	Length (mm)	Lumens	Circuit Power (W)
BW UD RD1	580	2780	31
BW UD RD2	1160	5760	57

Width 65mm
Thickness
Double sided
25mm

UGR 19 Diffuser 60°

Light Output
110° Up



Light Output
60° Down

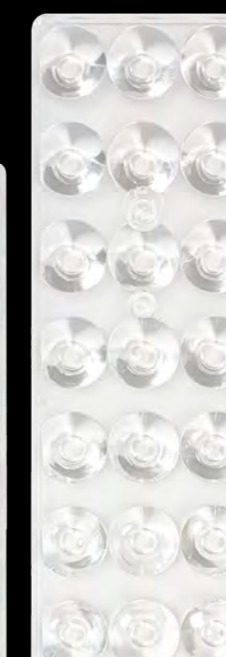
Satin Diffuser 110°



Matt Diffuser 110°



Clear Diffuser 110°



BUBBLE WAFER 2

INTEGRAL DRIVER



Integral Driver. Suspended/Surface mounted.

THE 24V LED DIFFUSED BUBBLE WAFER IS SLIM, ROBUST AND CAN BE SUSPENDED HORIZONTALLY OR ANGLED.

The suspended linear LED light is ideal for corporate spaces and retail. Finished in a choice of colours stylish silver or black aluminium housing, utilising a frosted diffuser for subtle light output suiting a wide range of commercial interiors. This fitting runs on a 24V constant voltage driver that can be Dali dimmable. A range of colours can be achieved by using our coloured filters.

Light Source Information

- 24V LED Integral Driver.
- Available in 3000K, 4000K.

Dimming

Dali.

Installation

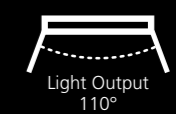
Horizontal, angled suspension or surface mounted. 3m cable supplied.

Optics

PMMA diffuser, Clear, Matt or Satin available. Colour filter can be used to create a range of colours.

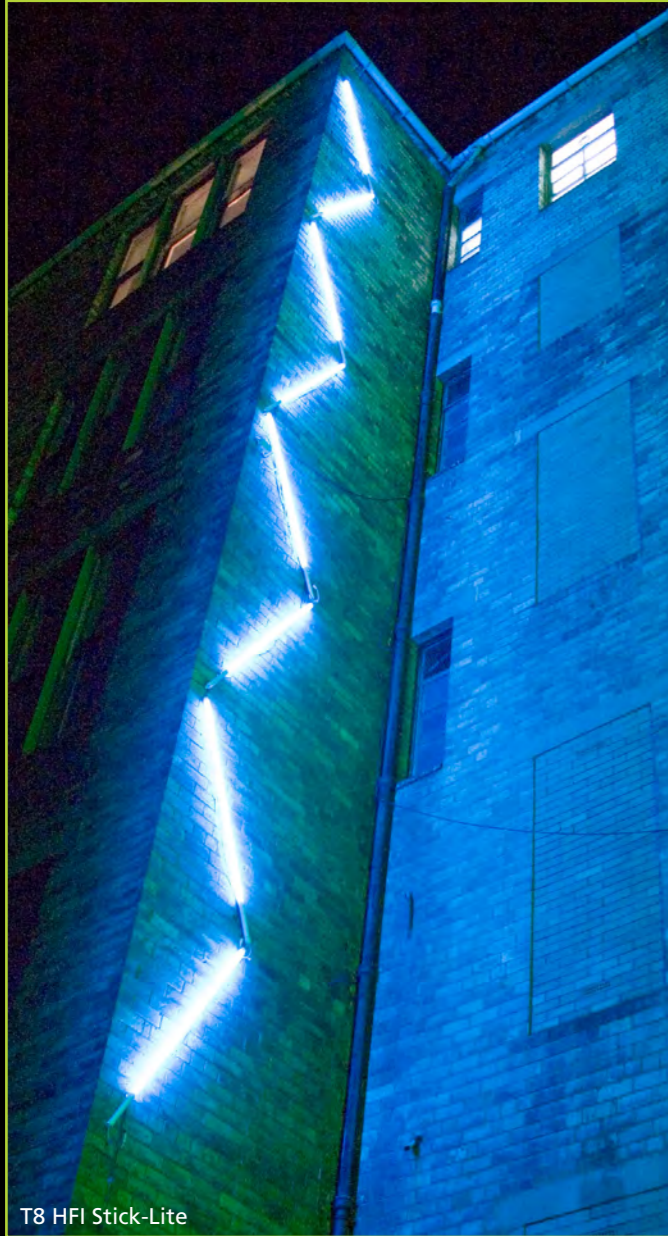


Suspension Kit



Cat No.	Length (mm)	Lumens	Circuit Power (W)
BW D ID1	580	1390	16
BW D ID2	1160	2880	29
BW D ID3	1740	4525	43





T8 HFI Stick-Lite



T5 HFI Stick-Lite - can be achieved with HFI LED Stick-Lite



T8 HFI Stick-Lite - can be achieved with HFI LED Stick-Lite



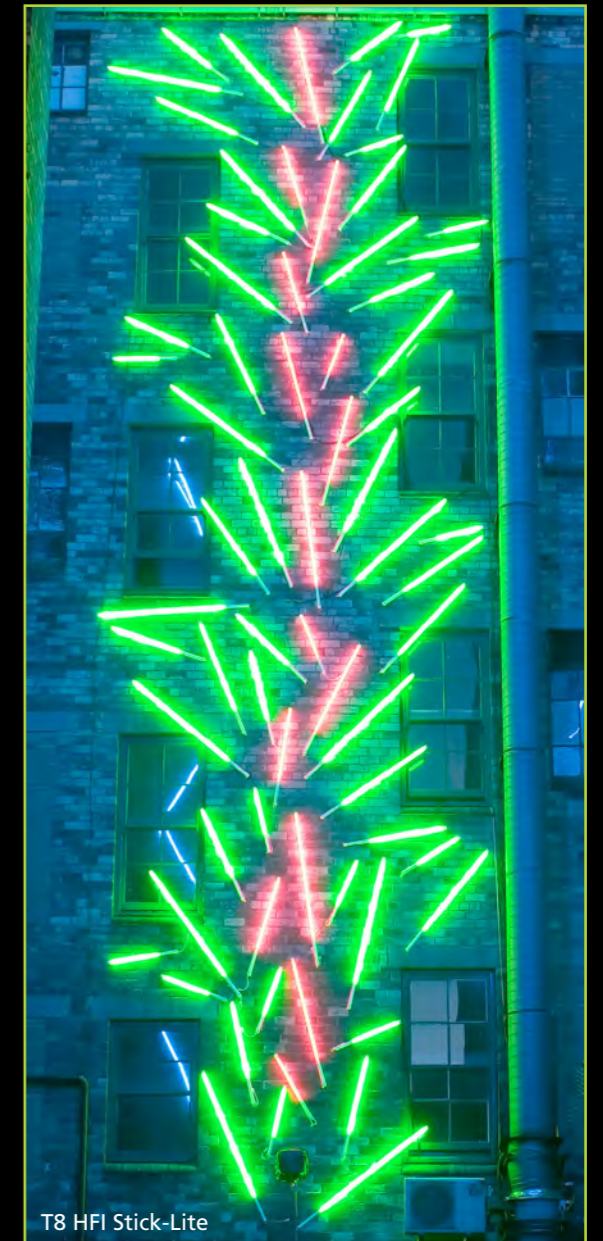
Can be achieved with HFI LED Stick-Lite



T8 HFI Stick-Lite - can be achieved with HFI LED Stick-Lite



24V Twin Stick



T8 HFI Stick-Lite

MT70 LED AC INTEGRAL DRIVER



Suspended/Surface mounted. Tubular LED light, with chrome plated aluminium end caps.

THE MT70 LED AC IS A CLEAN-CUT DESIGNED LED FITTING.

The satin or clear diffusers will enhance any modern space. The light can be suspended horizontally or surface mounted. The cylindrical tube offers a 180° distribution of light through its polycarbonate diffuser.

The MT70 LED AC is an incredibly versatile linear lighting solution, it makes use of efficient LED technology offering switched or DALI dimming options for a controllable level of light output.

Suitable for almost any interior application.

Light Source Information

- LED/Electronic Driver.
- Available in 3000K, 4000K.

Options

- 3hr Emergency with Dali monitoring.
- Chrome plated aluminium end caps as standard.
- Anodised end caps available in many more colours including black, gold, rose gold and brass (see right).
- Available as through wired and plug & go.

Emergency available from size 4 upwards, HE only.

Dimming

1-10V or Dali.

Installation

Horizontal, angled suspension or surface mounted.

Optics

Satin or clear polycarbonate diffuser.



Available End Cap colours



Suspension Kit



Plastic & Stainless Steel Clamps

Cat No.	Length (mm)	Lumens Clear	Lumens Satin	Circuit Power (W)
HIGH EFFICIENCY				
MT70 LED 2 HE AC	572	1100	1190	11
MT70 LED 3 HE AC	852	1950	1875	15
MT70 LED 4 HE AC	1132	2580	2375	19
MT70 LED 5 HE AC	1412	3100	3140	23
MT70 LED 6 HE AC	1692	3680	4000	28
MT70 LED 7 HE AC	1972	4625	4295	30
MT70 LED 8 HE AC	2252	5270	5330	35
HIGH OUTPUT				
MT70 LED 2 HO AC	572	3310	3865	27
MT70 LED 3 HO AC	852	4710	4650	32
MT70 LED 4 HO AC	1132	5950	4350	41
MT70 LED 5 HO AC	1412	6130	6568	44
MT70 LED 6 HO AC	1692	6665	6350	52
MT70 LED 7 HO AC	1972	8978	8344	60
MT70 LED 8 HO AC	2252	10515	10215	69



Tube ø 70mm



Cap ø 75mm



Light output 180°

MT70 LED AC2

INTEGRAL DRIVER



Suspended/Surface mounted. Tubular LED light, with aluminium end caps.

A CLEAN-CUT CLASSIC DESIGNED LED FITTING.

The satin or clear diffuser will enhance any modern space. The light can be suspended horizontally or surface mounted. The cylindrical tube offers a 180° distribution of light through its polycarbonate satin diffuser.

The MT70 LED AC2 is an incredibly sleek linear lighting solution, it makes use of efficient LED technology offering switched or DALI dimming options for a controllable level of light output.

Suitable for almost any interior application.

Light Source Information

- LED/Electronic Driver.
- Available in 3000K & 4000K.

Options

- 3hr Emergency with Dali monitoring.
- Aluminium end caps as standard.
- Anodised end caps available in many more colours including black, gold, rose gold and brass (see right).
- Available as through wired and plug & go.

Emergency available from size 4 upwards, HE only Through wired and plug & go add 10mm to the length.

Dimming

1-10V or Dali.

Installation

Horizontal, angled suspension or surface mounted.

Optics

Satin or clear polycarbonate diffuser.



Available End Cap colours



Suspension Kit



Plastic & Stainless Steel Clamps

Cat No.	Length (mm)	Lumens Clear	Lumens Satin	Circuit Power (W)
HIGH EFFICIENCY				
MT70 LED 2 HE AC2	598	1100	1190	11
MT70 LED 3 HE AC2	878	1950	1875	15
MT70 LED 4 HE AC2	1158	2580	2375	19
MT70 LED 5 HE AC2	1438	3100	3140	23
MT70 LED 6 HE AC2	1718	3680	4000	28
MT70 LED 7 HE AC2	1998	4625	4295	30
MT70 LED 8 HE AC2	2278	5270	5330	35
HIGH OUTPUT				
MT70 LED 2 HO AC2	598	3310	3865	27
MT70 LED 3 HO AC2	878	4710	4650	32
MT70 LED 4 HO AC2	1158	5950	4350	41
MT70 LED 5 HO AC2	1438	6130	6568	44
MT70 LED 6 HO AC2	1718	6665	6350	52
MT70 LED 7 HO AC2	1998	8978	8344	60
MT70 LED 8 HO AC2	2278	10515	10215	69



Tube ø 70mm



Cap ø 70mm



Light output 180°

AC70 LED REMOTE DRIVER



Suspended/Surface mounted. Tubular LED light, with chrome plated aluminium end caps.

A CLASSIC DESIGN THAT PROVIDES 290° LIGHT DISTRIBUTION.

The AC70 LED provides 290° of light distribution through its polycarbonate satin diffuser. The fitting can be suspended horizontally, vertically or surface mounted. Remote switched or dimmable drivers can be up to 2m away from the light. The AC70 LED is an incredibly versatile linear lighting solution.

Suitable for almost any interior application.

Light Source Information

- LED Remote Driver.
- Available in 3000K & 4000K.

Options

- Aluminium chrome plated end caps as standard.
- Anodised end caps available in many more colours including black, gold, rose gold and brass (see right).

Dimming

Dali.

Installation

Horizontal, vertical, angled suspension, surface mounted. 2m of cable supplied.

Optics

Satin polycarbonate diffuser.

An individual driver will be required for each fitting.

Cat No.	Length (mm)	Lumens	Circuit Power (W)
AC70 LED RD2	570	1605	16
AC70 LED RD3	955	2765	23
AC70 LED RD4	1250	3655	29
AC70 LED RD5	1545	4400	35



Available End Cap colours



Suspension Kit



Plastic & Stainless Steel Clamps



Tube \varnothing 70mm



Cap \varnothing 75mm



Light output 290°

MT70 LED ELIPSE

INTEGRAL DRIVER



Suspended/Surface mounted. Tubular LED light, with elliptical moulded end caps.

A CLEAN-CUT CLASSIC DESIGNED LED FITTING.

The satin or clear diffuser will enhance any modern space. The light can be suspended horizontally or surface mounted. The cylindrical tube offers a 180° distribution of light through its polycarbonate satin diffuser. Available with black or white elliptical moulded end caps.

The MT70 LED Elipse is a designed alternative to MT70, it makes use of efficient LED technology offering switched or DALI dimming options for a controllable level of light output.

Suitable for almost any interior application.

Light Source Information

- LED/Electronic Driver.
- Available in 3000K & 4000K.

Options

- 3hr emergency with Dali monitoring.
- Black or white elliptical moulded end caps available.
- Available as through wired and plug and go.

Dimming

1-10V or Dali.

Installation

Horizontal, angled suspension or surface mounted.

Optics

Satin or clear polycarbonate diffuser.

Emergency available from size 4 upwards, HE only. Through wired and plug & go add 10mm to the length.



White End Cap



Surface Mount



Suspension Kit

Cat No.	Length (mm)	Lumens Clear	Lumens Satin	Circuit Power (W)
HIGH EFFICIENCY				
MT70 LED 2 HE ELP	572	1100	1190	11
MT70 LED 3 HE ELP	852	1950	1875	15
MT70 LED 4 HE ELP	1132	2580	2375	19
MT70 LED 5 HE ELP	1412	3100	3140	23
MT70 LED 6 HE ELP	1692	3680	4000	28
MT70 LED 7 HE ELP	1972	4625	4295	30
MT70 LED 8 HE ELP	2252	5270	5330	35
HIGH OUTPUT				
MT70 LED 2 HO ELP	572	3310	3865	27
MT70 LED 3 HO ELP	852	4710	4650	32
MT70 LED 4 HO ELP	1132	5950	4350	41
MT70 LED 5 HO ELP	1412	6130	6568	44
MT70 LED 6 HO ELP	1692	6665	6350	52
MT70 LED 7 HO ELP	1972	8978	8344	60
MT70 LED 8 HO ELP	2252	10515	10215	69



Tube ø 70mm



Cap ø 75mm



Light output 180°

MT70 LED IP67

INTEGRAL DRIVER



Suspended/Surface mounted. Tubular LED light, with black or grey IP67 end caps.

STRONG ROBUST FITTING FOR EXTERNAL USE.

The MT70 LED IP67 is a clean-cut classic designed LED fitting that can be used internally and externally. The satin or clear diffusers will enhance any modern space. The lights can be suspended horizontally or surface mounted. The cylindrical tube offers a 180° distribution of light through its polycarbonate diffuser.

The MT70 LED IP67 is an incredibly popular linear lighting solution, it makes use of efficient LED technology offering switched or DALI dimming options for a controllable level of light output.

Suitable for damp/wet areas, not intended for permanent submersion.

Light Source Information

- LED/Electronic Driver.
- Available in 3000K & 4000K.

Options

- 3hr Emergency with Dali monitoring.
- Available as through wired and plug and go.
- Grey or black IP67 end caps.

Dimming

1-10V or Dali.

Installation

Horizontal, angled suspension or surface mounted.

Optics

Satin or clear polycarbonate diffuser.

Emergency available from size 4 upwards, HE only. Through wired and plug & go add 30mm to the length.



IP67 End Cap



Tear Drop Suspension Kit



Plastic & Stainless Steel Clamps

Cat No.	Length (mm)	Lumens Clear	Lumens Satin	Circuit Power (W)
HIGH EFFICIENCY				
MT70 LED 2 HE	655	1100	1190	11
MT70 LED 3 HE	935	1950	1875	15
MT70 LED 4 HE	1215	2580	2375	19
MT70 LED 5 HE	1495	3100	3140	23
MT70 LED 6 HE	1775	3680	4000	28
MT70 LED 7 HE	2055	4625	4295	30
MT70 LED 8 HE	2335	5270	5330	35
HIGH OUTPUT				
MT70 LED 2 HO	655	3310	3865	27
MT70 LED 3 HO	935	4710	4650	32
MT70 LED 4 HO	1215	5950	4350	41
MT70 LED 5 HO	1495	6130	6568	44
MT70 LED 6 HO	1775	6665	6350	52
MT70 LED 7 HO	2055	8978	8344	60
MT70 LED 8 HO	2335	10515	10215	69



Tube ø 70mm



Cap ø 75mm



Light output 180°



AP LED RD



LOUIS VUITTON

T8 HFI Stick-Lite - can be achieved with HFI LED Stick Lite



T5 HFI Stick-Lite Remote Gear - can be achieved with 24V Twin Stick



24V Twin Stick



T8 HFI Stick-Lite



RGB30

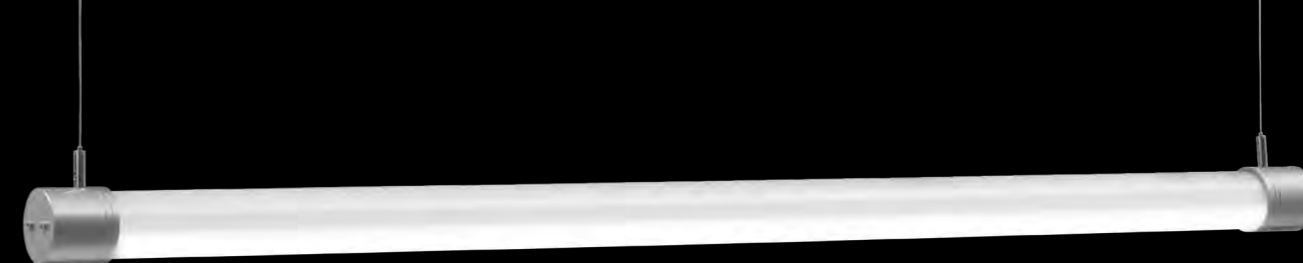


nudebynature
MAKE-UP THAT'S GOOD FOR YOU

BLUE'S
SALON

MT50 LED AC

INTEGRAL DRIVER



Suspended/Surface mounted. Tubular LED light, with aluminium end caps.

A CLASSIC LED FITTING.

The MT50 LED AC is a clean-cut classic design LED fitting. The satin or clear diffusers will enhance any modern space. The lights can be suspended horizontally or surface mounted. The cylindrical tube offers a 180° distribution of light through its polycarbonate diffuser.

The MT50 LED AC is an incredibly versatile linear lighting solution, it makes use of efficient LED technology offering switched or Dali dimming options for a controllable level of light output.

Suitable for almost any interior application.

Light Source Information

- LED/Electronic Driver.
- Available in 3000K & 4000K.

Options

- 3hr Emergency with Dali monitoring.
- Available as through wired and plug and go.
- Aluminium end caps as standard.
- Anodised end caps available in many more colours including black, rose gold and brass (see right).

Dimming

1-10V or Dali.

Installation

Horizontal, angled suspension or surface mounted.

Optics

Satin or clear polycarbonate diffuser.



Available End Cap colours



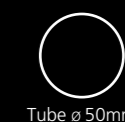
Suspension Kit



Plastic & Stainless Steel Clamps

Emergency available from size 4 upwards, HE only.

Cat No.	Length (mm)	Lumens Clear	Lumens Satin	Circuit Power (W)
HIGH EFFICIENCY				
MT50 LED 2 HE AC	582	1250	1340	12
MT50 LED 3 HE AC	862	1950	1820	15
MT50 LED 4 HE AC	1142	2600	2040	20
MT50 LED 5 HE AC	1422	3410	3640	23
MT50 LED 6 HE AC	1702	4045	3670	27
MT50 LED 7 HE AC	1982	4700	4510	31
MT50 LED 8 HE AC	2262	5190	5260	34
HIGH OUTPUT				
MT50 LED 2 HO AC	582	3015	2555	19
MT50 LED 3 HO AC	862	3690	4190	27
MT50 LED 4 HO AC	1142	5240	5400	35
MT50 LED 5 HO AC	1422	5630	6590	43
MT50 LED 6 HO AC	1702	6765	8015	49
MT50 LED 7 HO AC	1982	8810	8110	60
MT50 LED 8 HO AC	2262	9680	9680	65



MT50 LED AC2

INTEGRAL DRIVER



Suspended/Surface mounted. Tubular LED light, with aluminium end caps.

A CLASSIC LED FITTING WITH 180° OF LIGHT DISTRIBUTION.

The MT50 LED AC2 is a slim and sleek designed LED fitting. The satin or clear diffusers will enhance any space. The light can be suspended horizontally or surface mounted. The cylindrical tube offers a 180° distribution of light through its polycarbonate diffuser.

The MT50 LED AC2 is a multiple application linear lighting solution, it makes use of efficient LED technology offering switched or Dali dimming options for a controllable level of light output.

Suitable for almost any interior application.

Light Source Information

- LED/Electronic Driver.
- Available in 3000K & 4000K.

Options

- 3hr Emergency with Dali monitoring.
- Available as through wired and plug and go.
- Aluminium end caps as standard.
- Anodised end caps available in many more colours including black, rose gold and brass (see right).

Dimming

1-10V or Dali.

Installation

Horizontal, angled suspension or surface mounted.

Optics

Satin or clear polycarbonate diffuser.



Available End Cap colours



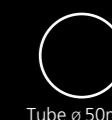
Suspension Kit



Plastic & Stainless Steel Clamps

Emergency available from size 4 upwards, HE only. Through wired and plug & go add 10mm to the length.

Cat No.	Length (mm)	Lumens Clear	Lumens Satin	Circuit Power (W)
HIGH EFFICIENCY				
MT50 LED 2 HE AC2	607	1250	1340	12
MT50 LED 3 HE AC2	887	1950	1820	15
MT50 LED 4 HE AC2	1167	2600	2040	20
MT50 LED 5 HE AC2	1447	3410	3640	23
MT50 LED 6 HE AC2	1727	4045	3670	27
MT50 LED 7 HE AC2	2007	4700	4510	31
MT50 LED 8 HE AC2	2287	5190	5260	34
HIGH OUTPUT				
MT50 LED 2 HO AC2	607	3015	2555	19
MT50 LED 3 HO AC2	887	3690	4190	27
MT50 LED 4 HO AC2	1167	5240	5400	35
MT50 LED 5 HO AC2	1447	5630	6590	43
MT50 LED 6 HO AC2	1727	6765	8015	49
MT50 LED 7 HO AC2	2007	8810	8110	60
MT50 LED 8 HO AC2	2287	9680	9680	65



Tube ø 50mm



Cap ø 50mm



Light output 180°

MT50 LED IP67

INTEGRAL DRIVER



Suspended/Surface mounted, Tubular LED light, with grey or black IP67 end caps.

A SLIM DESIGNED LED FITTING.

The MT50 LED IP67 is a slim designed LED fitting that can be used internally and externally. The satin or clear diffusers will enhance any modern space. The lights can be suspended horizontally or surface mounted. The cylindrical tube offers a 180° distribution of light through its polycarbonate diffuser.

The MT50 LED IP67 is an incredibly versatile linear lighting solution, it makes use of efficient LED technology offering switched or Dali dimming options for a controllable level of light output.

Suitable for damp/wet areas, not intended for permanent submersion.

Light Source Information

- LED/Electronic Driver.
- Available in 3000K & 4000K.

Options

- 3hr Emergency with Dali monitoring.
- Grey or black IP67 end caps.
- Available as through wired and plug and go.

Dimming

1-10V or Dali.

Installation

Horizontal, angled suspension or surface mounted.

Optics

Satin or clear polycarbonate diffuser.

Emergency available from size 4 upwards, HE only. Through wired and plug & go add 30mm to the length.



Grey End Cap



Tear Drop Suspension Kit



Plastic & Stainless Steel Clamps

Cat No.	Length (mm)	Lumens Clear	Lumens Satin	Circuit Power (W)
HIGH EFFICIENCY				
MT50 LED 2 HE	655	1250	1340	12
MT50 LED 3 HE	935	1950	1820	15
MT50 LED 4 HE	1215	2600	2040	20
MT50 LED 5 HE	1495	3410	3640	23
MT50 LED 6 HE	1775	4045	3670	27
MT50 LED 7 HE	2055	4700	4510	31
MT50 LED 8 HE	2335	5190	5260	34
HIGH OUTPUT				
MT50 LED 2 HO	655	3015	2555	19
MT50 LED 3 HO	935	3690	4190	27
MT50 LED 4 HO	1215	5240	5400	35
MT50 LED 5 HO	1495	5630	6590	43
MT50 LED 6 HO	1775	6765	8015	49
MT50 LED 7 HO	2055	8810	8110	60
MT50 LED 8 HO	2335	9680	9680	65



Tube ø 50mm



Cap ø 55mm



Light output 180°

MT50 IP67

INTEGRAL ECG



Suspended/Surface mounted. Tubular fluorescent light, with grey or black IP67 end caps.

THE MT50 IP67 IS A SLIM ROBUST DESIGNED FITTING.

Can be used internally or externally. The satin or clear diffusers will enhance any modern space. The light can be suspended horizontally or surface mounted. The cylindrical tube offers a 180° distribution of light through its polycarbonate diffuser.

The MT50 IP67 is an incredibly versatile linear lighting solution which can also be fitted with coloured DDP Sleeves. The fitting makes use of T5 fluorescent lamps, offering switched, Dali or 1-10V Dimming options for a controllable level of light output.

Suitable for external and internal use.

Light Source Information

- T5 fluorescent lamp, integral ballast.
- Available in 3000K, 4000K, 6500K.

Options

- 3hr Emergency with Dali monitoring.

Dimming

1-10V or Dali.

Installation

Horizontal, angled suspension or surface mounted.

Optics

Satin or clear polycarbonate diffuser. DDP Sleeves available to create coloured effects.

Emergency fittings add 40mm to length. Through wired and plug & go add 30mm to length. Emergency with through wired or plug & go add 70mm to the length.

Cat No.	Length (mm)	Lumens Clear	Lumens Satin	Circuit Power (W)
MT50 8W	403	470	470	9
MT50 14W	660	1200	1200	16
MT50 21W	960	1900	1900	23
MT50 28W	1260	2600	2600	30
MT50 35W	1560	3300	3300	37

Not suitable for permanent submersion, do not dim in temperatures below +10°C use LED version.



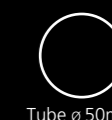
Black End Cap



Tear Drop Suspension Kit



Plastic & Stainless Steel Clamps



Tube \varnothing 50mm



Cap \varnothing 55mm



Light output 180°

MTIK10 LED IP67

INTEGRAL DRIVER



Suspended/Surface mounted. Linear LED light with grey or black IP67 end caps.

A SLIM D SHAPED TUBULAR DESIGN.

The MTIK10 LED IP67 can be surface mounted with stainless steel clamps. The fitting can be used internally and externally and offers 180° light distribution through its polycarbonate satin diffuser.

The MTIK10 LED IP67 is an incredibly robust linear lighting solution, it makes use of efficient LED technology offering switched or Dali dimming options for a controllable level of light output.

Suitable for damp/wet areas not intended for permanent submersion.

Light Source Information

- LED/Electronic Driver.
- Available in 3000K & 4000K.

Options

- 3hr Emergency with Dali monitoring.
- Grey or black IP67 end caps.
- Available as through wired and plug and go.

Dimming

1-10V or Dali.

Installation

Horizontal, angled suspension or surface mounted.

Optics

Satin or clear polycarbonate diffuser.

Emergency available from size 4 upwards, HE only. Through wired and plug & go add 30mm to the length.



Stainless Steel Clamp



Tear Drop Suspension Kit



Black End Cap



H 55mm
x W 57mm



Light output 180°

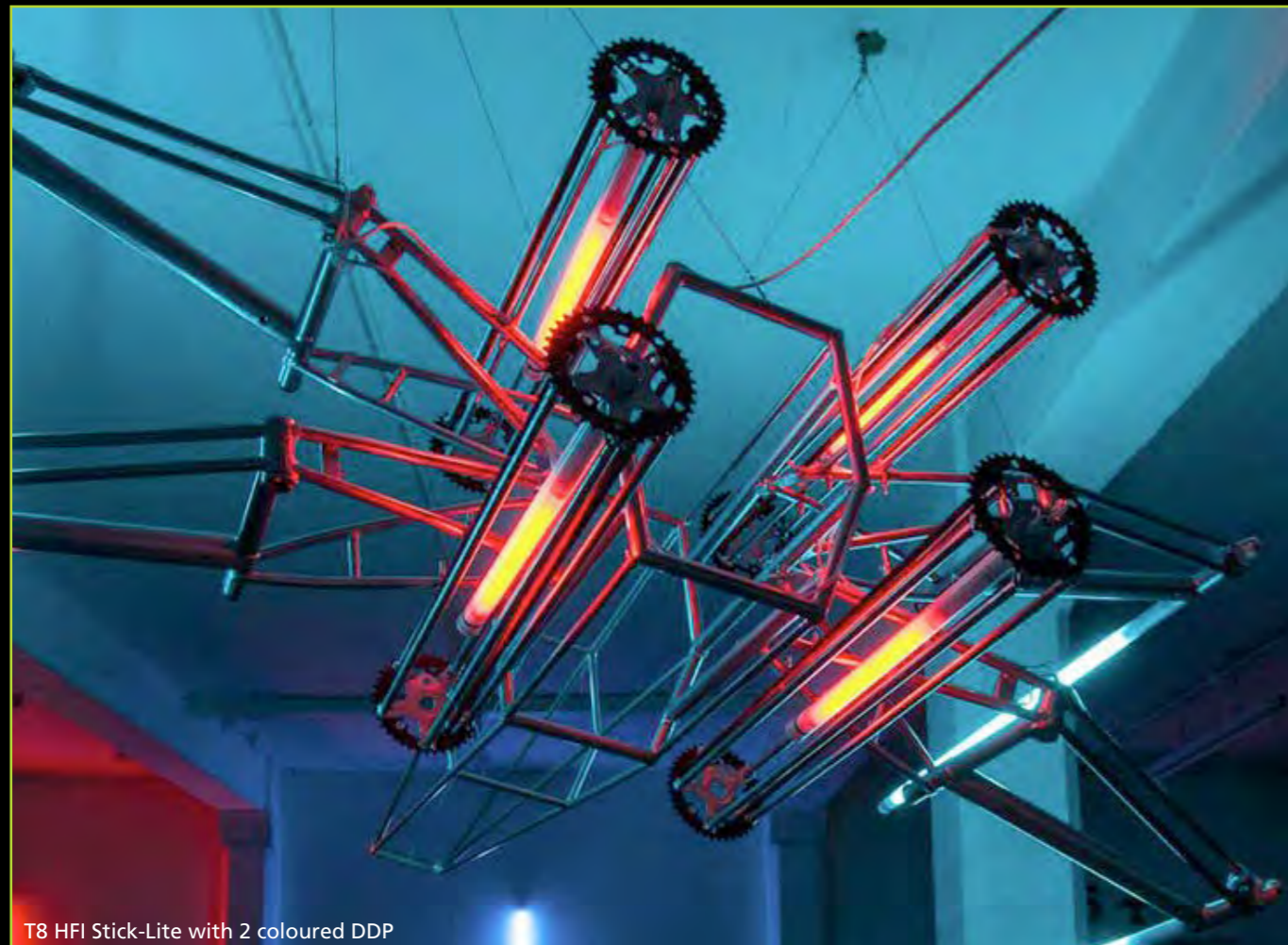
Cat No.	Length (mm)	Lumens Clear	Lumens Satin	Circuit Power (W)
HIGH EFFICIENCY				
MTIK10 LED 2 HE	655	1250	1340	12
MTIK10 LED 3 HE	935	1950	1820	15
MTIK10 LED 4 HE	1215	2600	2040	20
MTIK10 LED 5 HE	1495	3410	3640	23
MTIK10 LED 6 HE	1775	4045	3670	27
HIGH OUTPUT				
MTIK10 LED 2 HO	655	3660	2555	22
MTIK10 LED 3 HO	935	5155	4190	32
MTIK10 LED 4 HO	1215	4735	5400	36
MTIK10 LED 5 HO	1495	7165	6590	45
MTIK10 LED 6 HO	1775	6995	8015	52



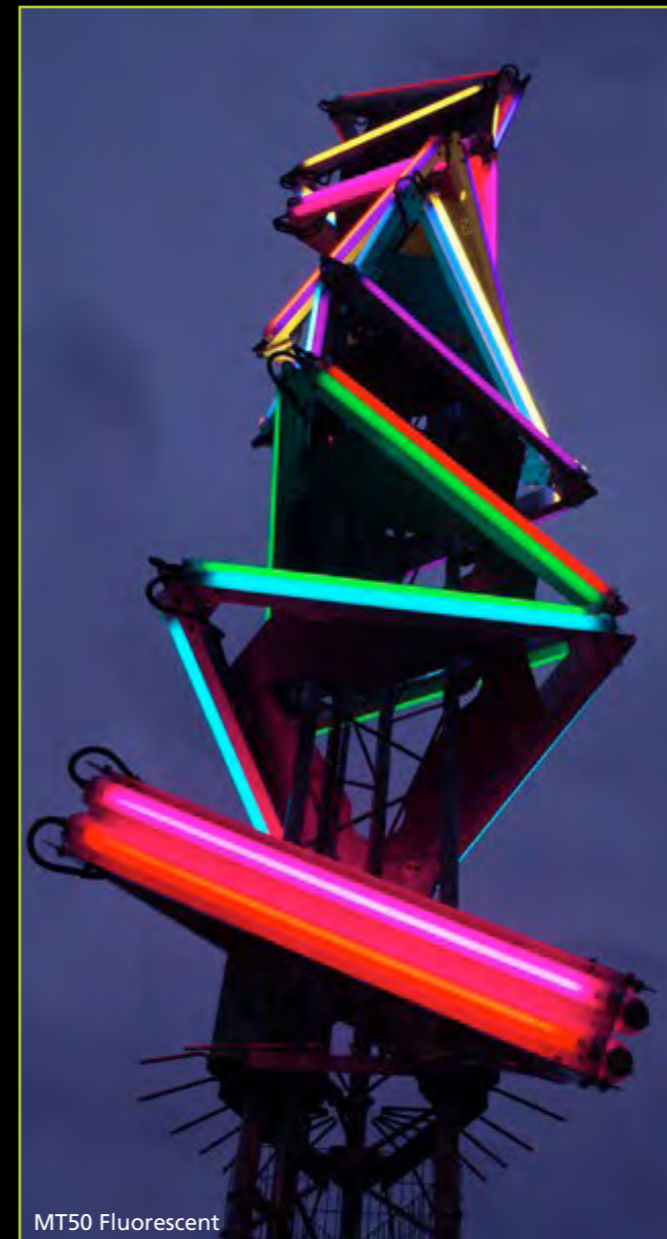
24V Twin Stick



MT50 Fluorescent



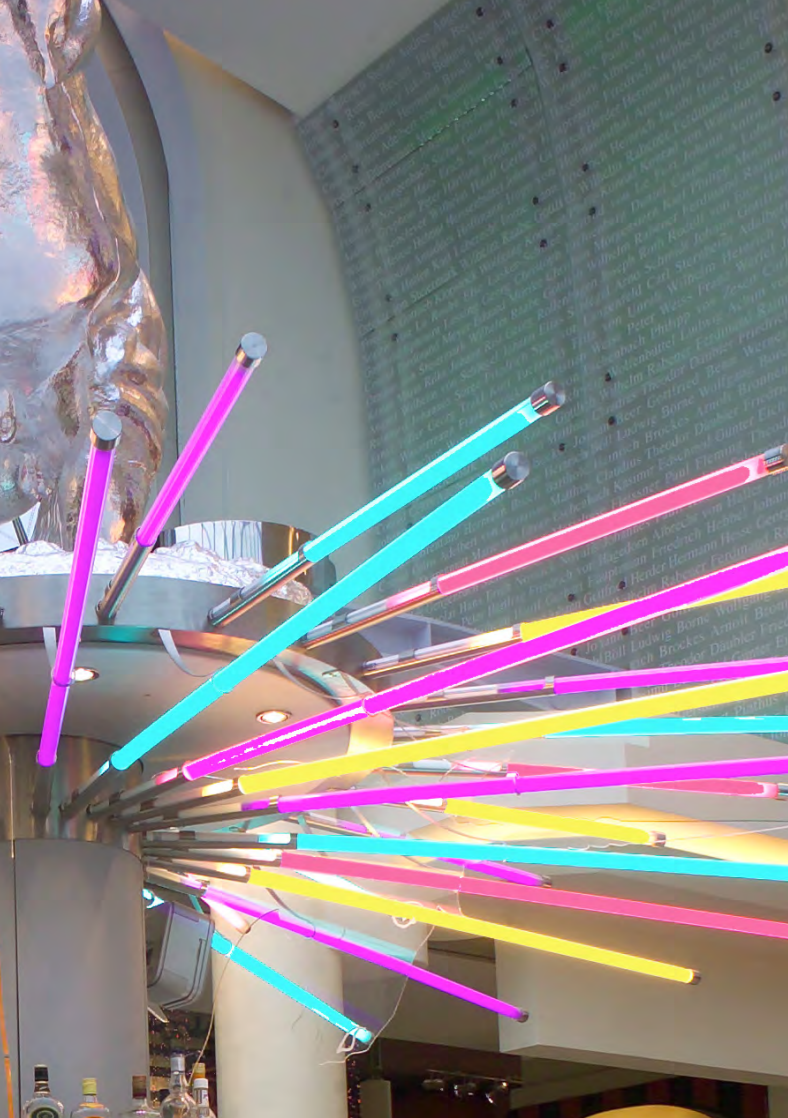
T8 HFI Stick-Lite with 2 coloured DDP



MT50 Fluorescent



MT50 Fluorescent



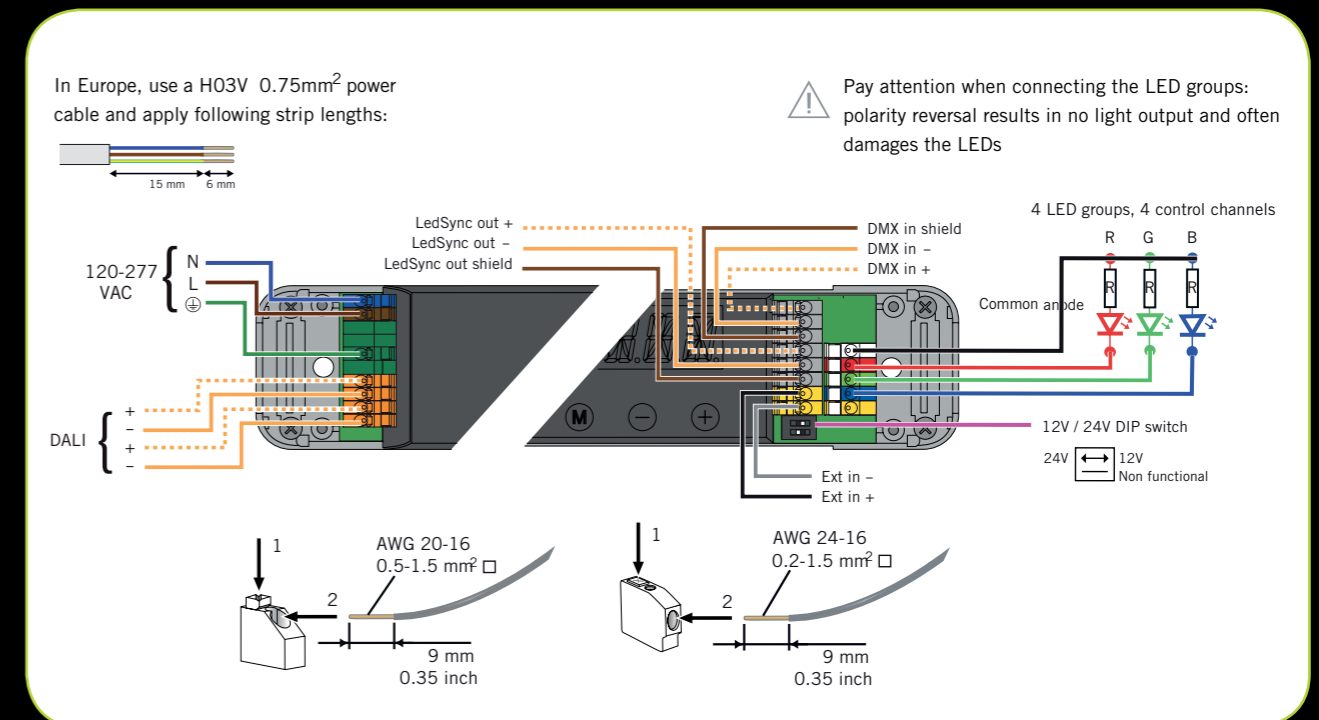
COLOUR CHANGING PRODUCTS

THE RGB RANGE

When using our RGB range, multiple drivers (slaves) can be connected to each other and then controlled by a master driver. Alternatively, a control system would allow you to address each driver individually or as group. The capability of the driver allows you to control the speed, colour and intensity. Dimming output from 100% to 1% with DMX or Dali.

When using a 16 Amp B circuit breaker you can control up to 13 drivers and a 16 Amp C circuit breaker you can control up to 27 drivers.

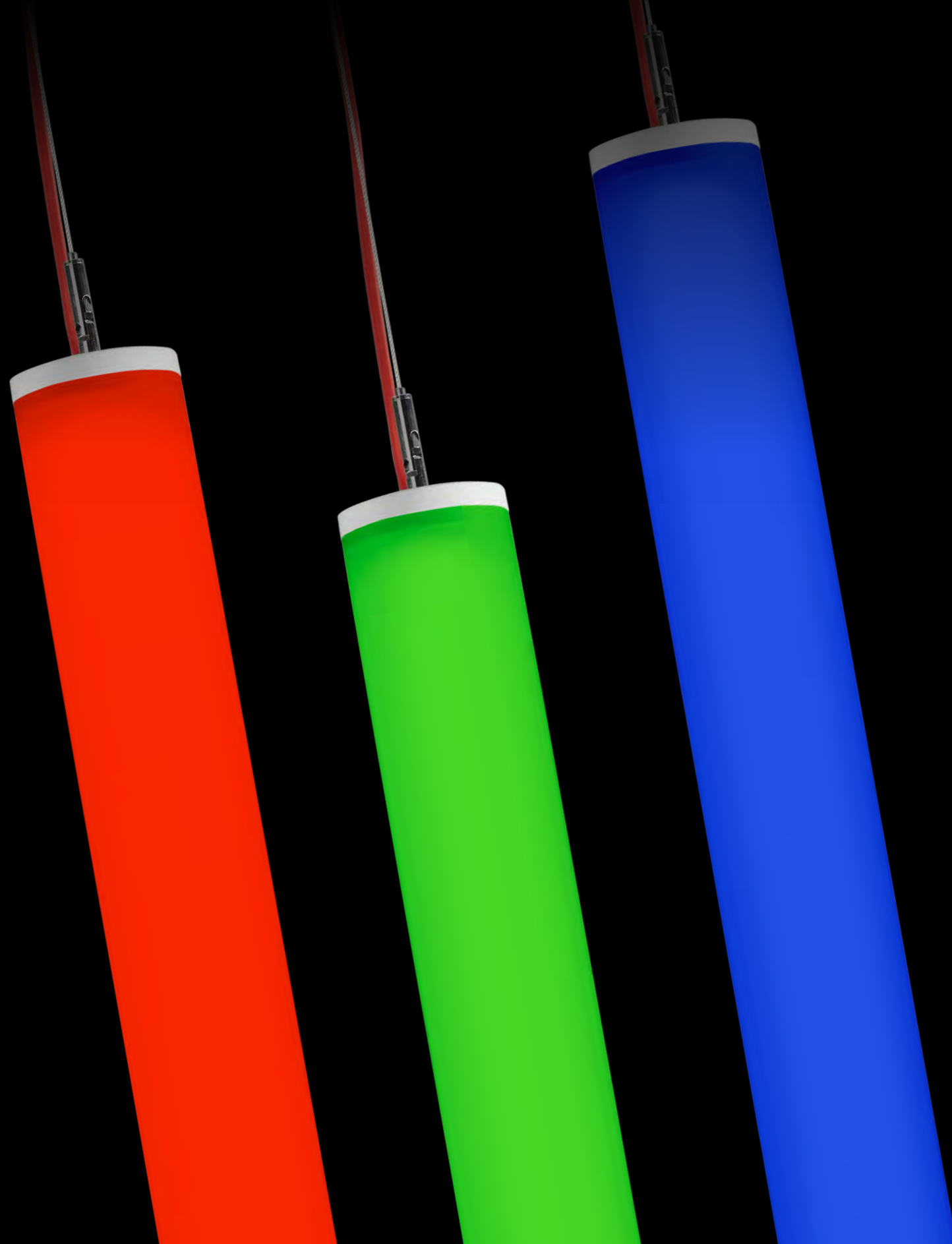
The maximum cable length from driver to control system is 300m. The maximum cable length from driver to light is 5m.



NEVER RUN ALL THREE COLOURS AT 100% AS THIS COULD CAUSE PERMANENT DAMAGE TO THE LIGHTS.

MT360 RGB

REMOTE DRIVER



Suspended, cylindrical colour changing light, with true 360° output of light.

THE MT360 RGB IS A NEW DESIGNED CYLINDRICAL LED FITTING.

This light gives you the ability to create lighting designs and beautiful features. This can be suspended horizontally or vertically. The distribution of light is 360° through its polycarbonate satin diffuser.

The light makes use of efficient LED technology offering DMX or Dali dimming options for a controllable level of light output.

Widely used in the Theatre, TV, retail, events companies and entertainment industries.

Light Source Information

- LED/Electronic Driver.

Options

- Injection moulded end caps in white, other colours available.

Dimming

Dali, DMX

Installation

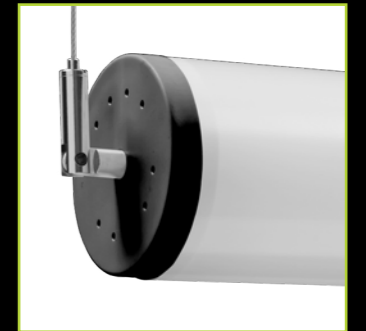
Horizontal, vertical and angled suspension.

Optics

Satin polycarbonate diffuser.

RGB DMX Dali driver required with this product, see details on p43.

Cat No.	Length (mm)	Wattage	Voltage
MT360 RGB 5	525	22	24V DC
MT360 RGB 10	1025	44	24V DC
MT360 RGB 15	1525	66	24V DC



Black End Cap



Suspension Kit



End cap and Suspension Clutch



Tube ø 70mm



Cap ø 70mm



Light output 360°

RGB30 STICK-LITE

REMOTE DRIVER



Suspended/Surface mounted. Colour changing light with aluminium end caps.

A SLIM CYLINDRICAL DESIGN.

The RGB30 Stick-Lite can be surface mounted, vertically or horizontally suspended. This light offers 360° light distribution through its polycarbonate satin diffuser. Connect to a suitable driver and control system, then with multiple lights within an installation, you can create dramatic, dynamic and subtle effects. The RGB30 Stick-Lite makes use of efficient LED technology offering Dali or DMX dimming options for a controllable level of light output.

Regularly used in Theatre, TV, retail, events companies and entertainment industries.

Light Source Information

- LED/Electronic Driver.

Options

- Aluminium end caps as standard.
- Anodised end caps available in many more colours including black, rose gold and brass (see right).

Dimming

Dali. DMX.

Installation

Horizontal, vertical and angled suspension, surface mounted.

Optics

Satin polycarbonate diffuser.

RGB DMX Dali driver required with this product, see details on p43.

Cat No.	Length (mm)	Illuminated Length (mm)	Wattage	Voltage
RGB30 5	525	455	22	24V DC
RGB30 10	1025	960	44	24V DC
RGB30 15	1525	1460	66	24V DC



Available End Cap colours



Suspension Kit



Black End Caps



Tube \varnothing 30mm



Cap \varnothing 33mm



Light output 360°

RGB70 AC REMOTE DRIVER



Suspended/Surface mounted. Colour changing light with aluminium end caps.

SUITABLE FOR THEATRE, TV AND RETAIL AND MANY MORE APPLICATIONS

The RGB70 AC is a cylindrical design that can be suspended vertically or horizontally and surface mounted. The light offers 290° light distribution through its polycarbonate satin diffuser. Connect to a suitable driver and control system, then with multiple lights within an installation, you can create dramatic, dynamic and subtle effects. It makes use of efficient LED technology offering switched, Dali or DMX dimming options for a controllable level of light output.

Light Source Information

- LED/Electronic Driver.

Options

- Aluminium Chrome end caps as standard.
- Anodised end caps available in many more colours including black, rose gold and brass (see right).

Dimming

Dali. DMX.

Installation

Horizontal, vertical and angled suspension, surface mounted.

Optics

Satin polycarbonate diffuser.



Available End Cap colours



Suspension Kit



Plastic & Stainless Steel Clamps

RGB DMX Dali driver required with this product, see details on p43.

Cat No.	Length (mm)	Illuminated Length (mm)	Wattage	Voltage
RGB70 AC 5	525	425	15	24V DC
RGB70 AC 10	1025	925	29	24V DC
RGB70 AC 15	1525	1425	44	24V DC
RGB70 AC 20	2025	1925	58	24V DC



Tube ø 70mm

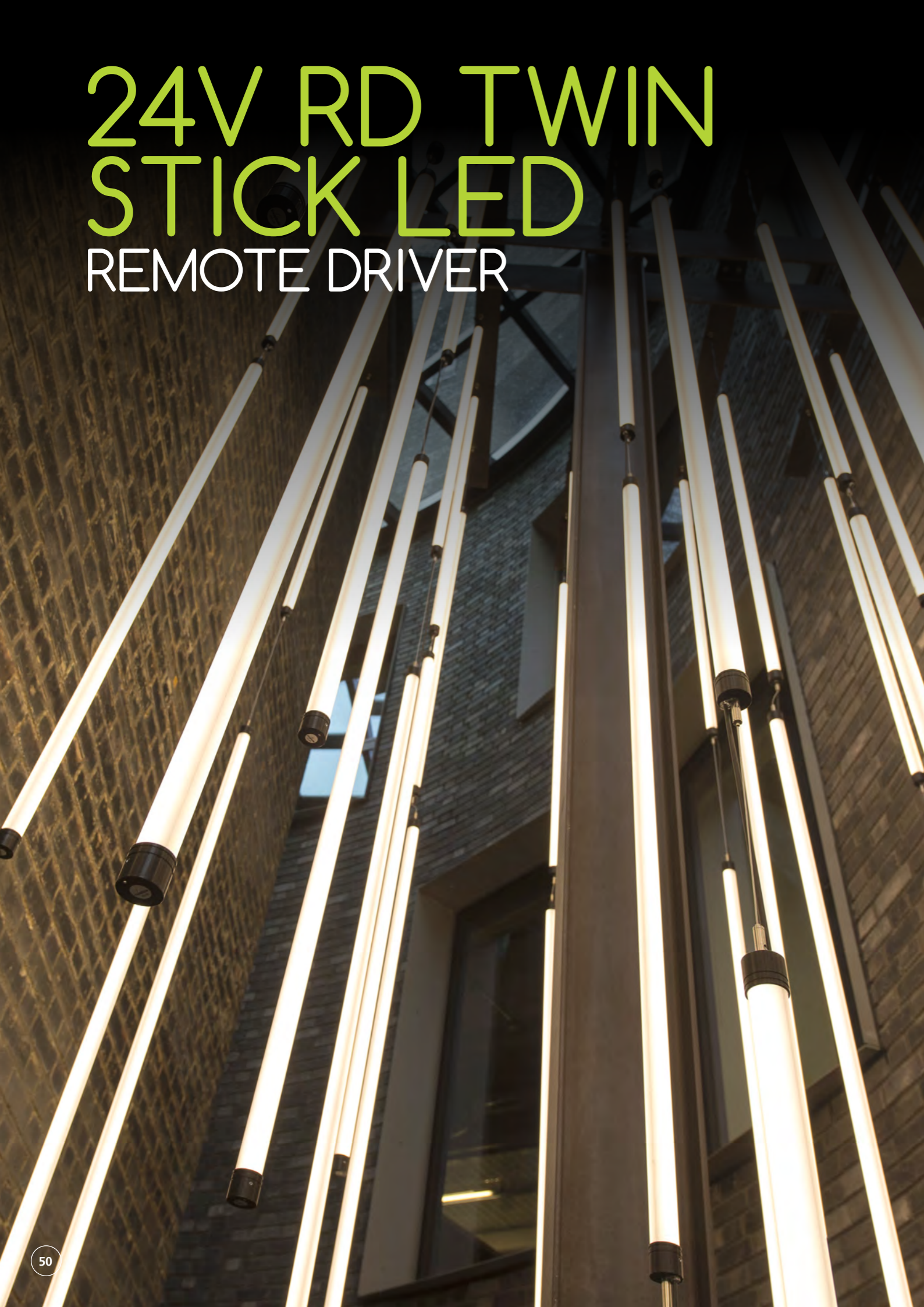


Cap ø 75mm



Light output 290°

24V RD TWIN STICK LED REMOTE DRIVER



Suspended/Surface mounted. Tubular diffused LED light, with aluminium end caps.

A ROBUST, SLIM LED DIFFUSED CYLINDRICAL TUBE.

The 24V RD Twin Stick is a robust, slim LED diffused cylindrical tube with the latest LED chips creating a cleaner 360° light output. The fitting can be suspended horizontally, vertically or at any angle, as well as surface mounted. Ideal as a creative feature luminaire which can incorporate many colours with the use of our coloured sleeves. Regularly used in Theatre, TV, retail, events companies, entertainment industries and for feature lighting.

The 24V RD Twin Stick will operate from a 24V constant voltage driver and can be dimmable.

Suitable for almost any dry interior application.

Light Source Information

- LED/Electronic Driver.
- Available in 2700K, 3000K & 4000K.

Options

- Aluminium end caps as standard.
- Anodised end caps available in many more colours including black, gold, rose gold and brass (see right).

Driver

A remote driver is required to run these fittings.

Dimming

100W Dali, 100W 1-10V, 60W Leading/trailing edge.

Installation

Horizontal, vertical and angled suspension, surface mounted.

Optics

Satin polycarbonate diffuser.



Available End Cap colours



Suspension Kit & Polycarbonate Clips



Discreet Rear Mount and Side Entry Cable

Cat No.	Length (mm)	Illuminated Length (mm)	Lumens	Circuit Power (W)
24V RD TS 5	525	455	610	16
24V RD TS 10	1025	960	1380	19
24V RD TS 15	1525	1460	2015	27

Drivers available: 30W, 75W, 100W/Dali, 100W 1-10V, 60W leading/trailing edge. When using 100W driver you can run the following:

Length	Wired back to Driver	Wired end to end
525	X8	X5
1025	X5	X4
1525	X3	X3

Total fitting wattage must not exceed driver wattage. Max cable length from driver to light is 10m.



24V RD TWIN STICK IP64 REMOTE DRIVER



Suspended/Surface mounted. Tubular diffused light, with black IP64 end caps.

THE LATEST LED CHIPS CREATE A CLEANER LIGHT OUTPUT.

The 24V RD Twin Stick is a robust, slim LED diffused cylindrical tube with the latest LED chips creating a cleaner 360° light output. The fitting can be suspended horizontally, vertically or at any angle, as well as surface mounted. Ideal as a creative feature luminaire.

The 24V RD Twin Stick IP64 will operate from a 24V constant voltage driver and can be dimmable.

Suitable for almost any dry exterior application.

Light Source Information

- LED/Electronic Driver.
- Available in 2700K, 3000K & 4000K.

Options

- Black end caps only.

Dimming

Leading/trailing edge, Dali, 1-10V. Driver must be installed in a dry place or can be supplied in 70mm casing for external use.

Installation

Horizontal, vertical, angled suspension or surface mounted.

Optics

Satin polycarbonate diffuser.



End Cap



Suspension Kit



Polycarbonate Clips

Cat No.	Length (mm)	Illuminated Length (mm)	Lumens	Circuit Power (W)
24V RD TS WP 5	600	480	480	11
24V RD TS WP 10	1095	970	1015	19
24V RD TS WP 15	1600	1470	1450	27

Drivers available: 30W, 75W, 100W/Dali, 100W 1-10V, 60W leading/trailing edge. When using 100W driver you can run the following:



Tube ø 30mm



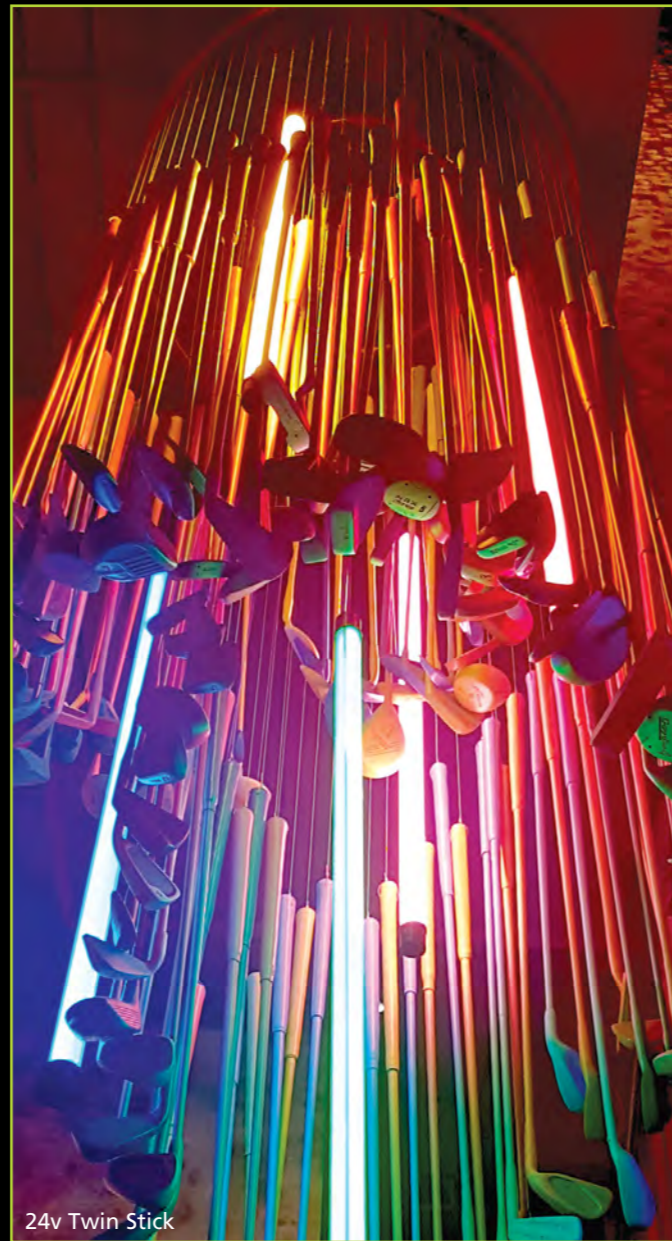
Cap ø 34mm



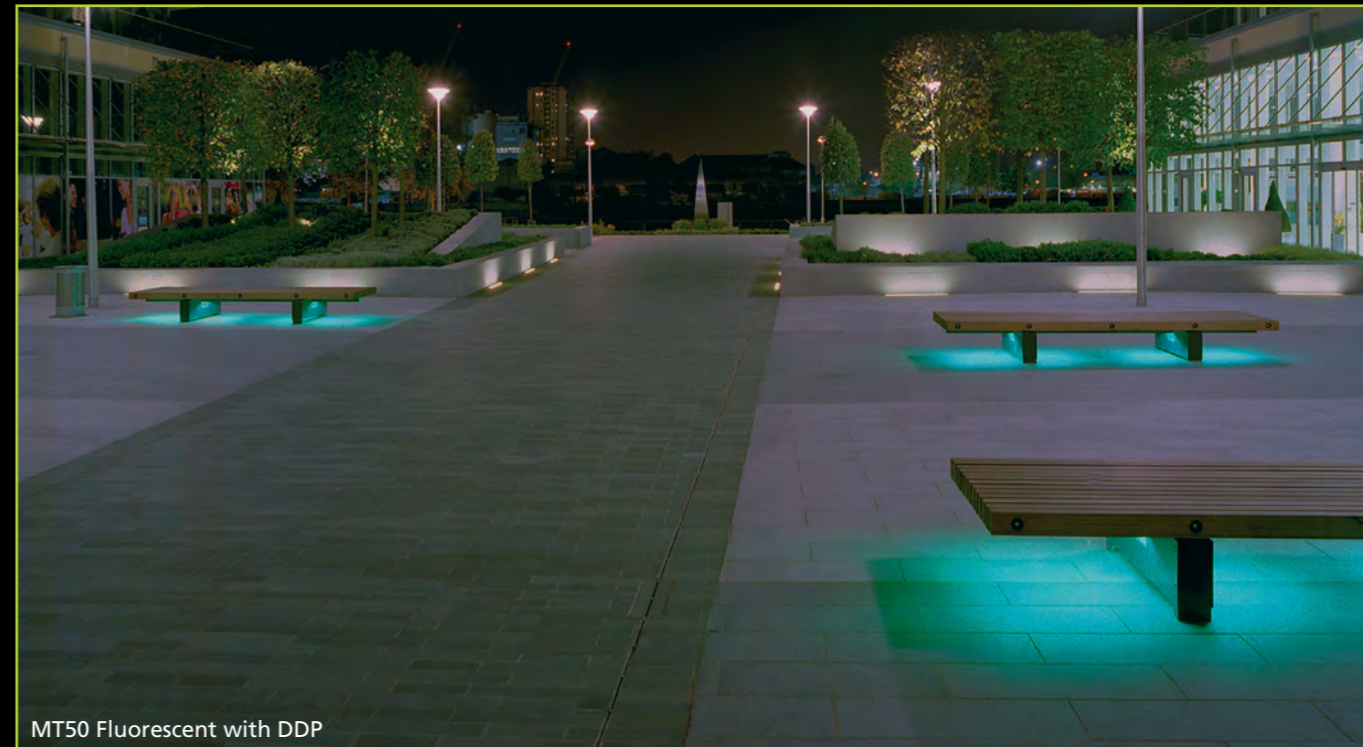
Light output 360°



24V Twin Stick



24V Twin Stick



MT50 Fluorescent with DDP



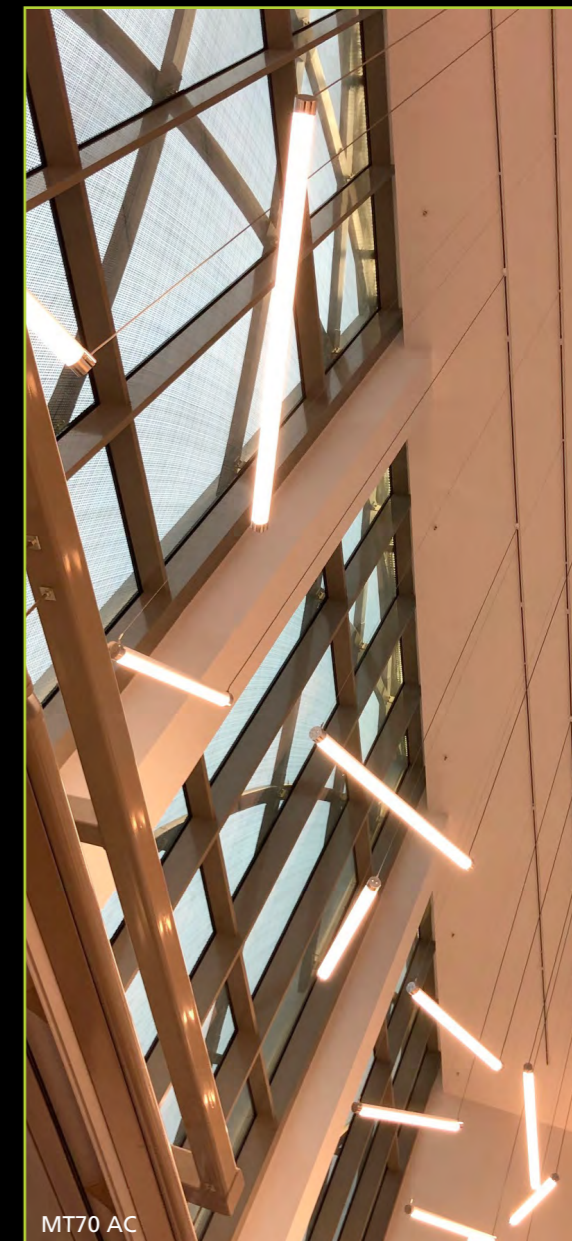
T8 HFI Stick-Lite. Can be achieved with HFI LED Stick-Lite



T8 HFI Stick-Lite



MT50 IP67. Can be achieved with MT50 LED IP67



MT70 AC

AP LED RD

REMOTE DRIVER



Suspended/Surface mounted. Linear diffused LED light with silver or black metalwork.

A SLIM TUBULAR DESIGN WITH 100° LIGHT DISTRIBUTION

The AP LED RD is a slim tubular design that can be suspended, or surface mounted with slotted brackets. The remote driver can be installed up to 2 metres away. The fitting has 100° light distribution through its polycarbonate satin diffuser.

The AP LED RD makes use of efficient LED technology offering switched or Dali dimming options for a controllable level of light output.

Light Source Information

- LED/Electronic Driver.
- Available in 3000K & 4000K

Options

Silver or Black Metalwork

Dimming

Dali.

Installation

Horizontal, angled suspension or surface mounted.

Optics

Satin polycarbonate diffuser.

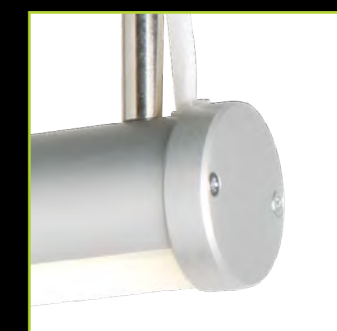
Cat No.	Length (mm)	Lumens	Circuit Power (W)
AP LED RD2	595	1010	17
AP LED RD3	875	1640	24
AP LED RD4	1155	2470	30
AP LED RD5	1435	2932	38



Mounting Bracket



Suspension Kit



Silver End Cap



Tube ø 38mm



Cap ø 40mm



Light output 100°

AP LED ID INTEGRAL DRIVER



Suspended/Surface mounted. Linear diffused LED light with silver or black metalwork.

A SLIM TUBULAR DESIGN WITH 100° LIGHT DISTRIBUTION

The AP LED ID is a slim tubular design that can be suspended, or surface mounted offering 100° light distribution through its polycarbonate satin diffuser.

The AP LED ID is an incredibly attractive linear lighting solution, it makes use of efficient LED technology offering switched or Dali dimming options for a controllable level of light output.

Light Source Information

- LED/Electronic Driver.
- Available in 3000K & 4000K

Options

- 3hr Emergency with Dali monitoring.
- Silver or Black Metalwork.

Dimming

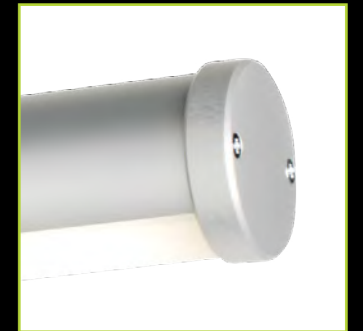
Dali.

Installation

Horizontal, angled suspension or surface mounted.

Optics

Satin polycarbonate diffuser.



Silver End Cap



Suspension Kit



Integral Driver

Cat No.	Length (mm)	Lumens	Circuit Power (W)
AP LED ID2	595	-	-
AP LED ID3	875	-	-
AP LED ID4	1155	3465	38
AP LED ID5	1435	4085	45

Emergency available from size 4.





MT50 Fluorescent IP67. Can be achieved with MT50 LED IP67



MT50 Fluorescent IP67. Can be achieved with MT50 LED IP67



24V Twin Stick



24V Twin Sticks



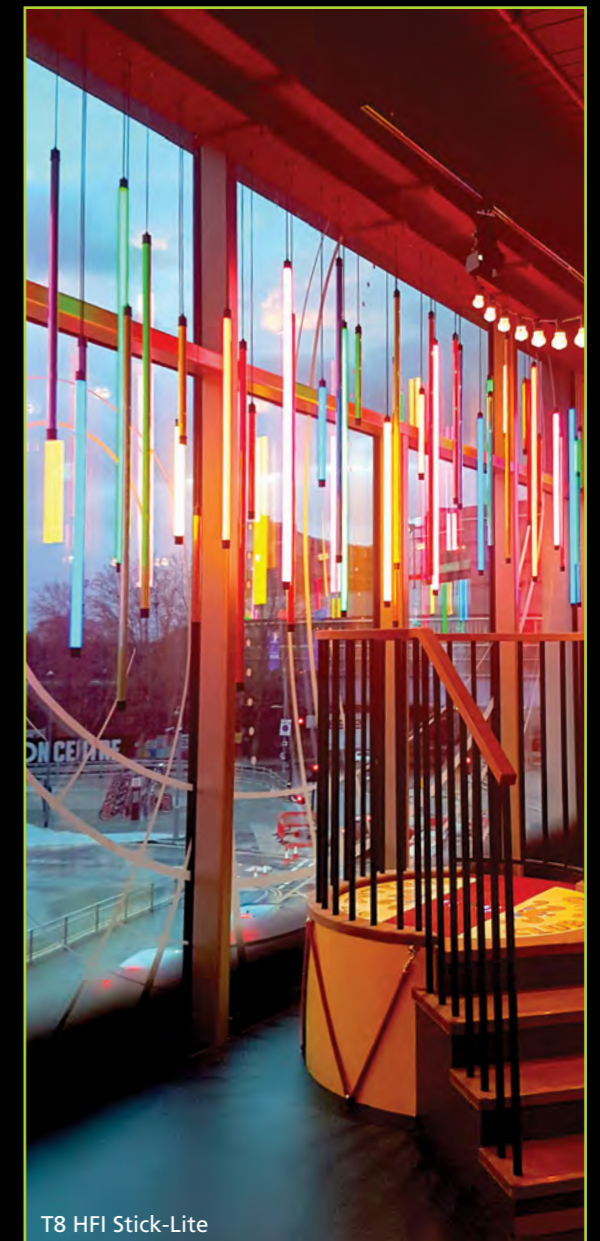
MT50 Fluorescent IP67.
Can be achieved with MT50 LED IP67



24V Twin Sticks and T8 HFJ LED Stick-Lites



24V Twin Sticks

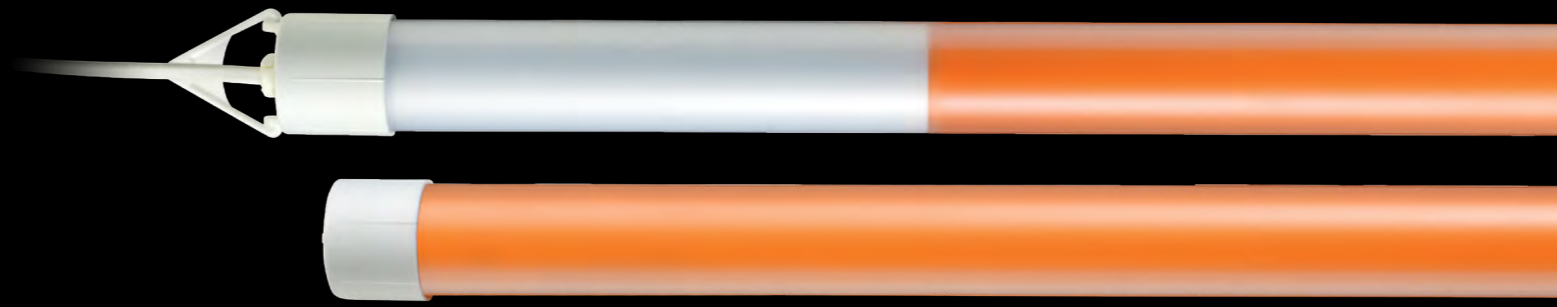


T8 HFJ Stick-Lite



T8 HFI STICK-LITE

INTEGRAL ECG



Suspended/Surface mounted. Linear diffused fluorescent light with white or black end caps.

A POPULAR OPTION FOR WINDOW AND SHOP DISPLAYS.

The T8 HFi Stick-Lite is a slim shaped tubular design that can be surface mounted with clear plastic clamps or placed in a Z stand. The light can be used internally and offers 360° light distribution through its polycarbonate satin diffuser. The light seamlessly incorporates many colours with the use of our coloured filters.

The T8 HFi Stick-Lite is a popular option for window and shop displays, also used widely within the TV and theatre industry.

Light Source Information

- Integral ECG.
- Available in 3000K & 4000K.

Options

White & black end caps. 3m of cable supplied.

Dimming

Not available.

Installation

Horizontal, vertical, angled suspension or surface mounted.

Optics

Satin polycarbonate diffuser. Can be used with DDP colours light red, light orange, ice blue, sky blue, chrome green, candy pink, pink, & candlelight. Larger selection of colours available with our coloured filters.

Cat No.	Length (mm)	Illuminated Length	Lumens	Circuit Power (W)
HFI T8 18W	765	560	1140	19
HFI T8 30W	1125	860	1940	30
HFI T8 36W	1435	1170	2530	33
HFI T8 58W	1735	1470	3730	49
HFI T8 70W	2060	1730	4710	62



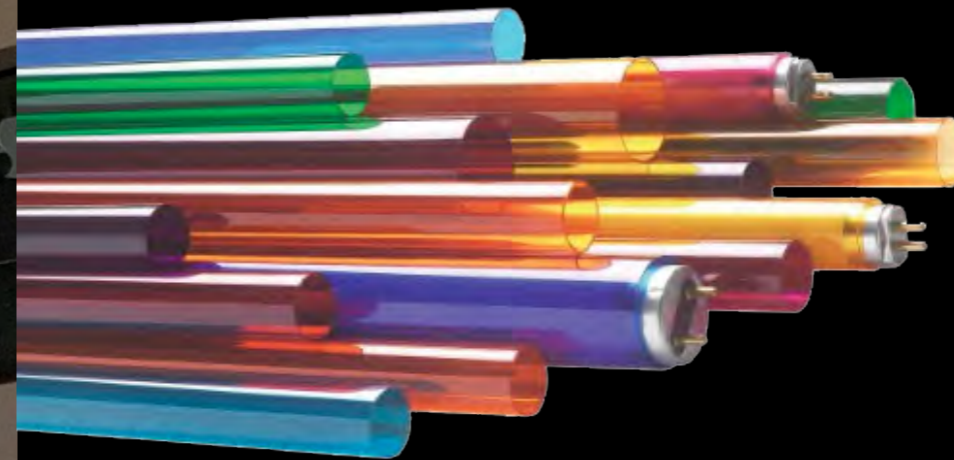
Z Stand



Suspension Kit



Plastic Clamps



Tube ø 30mm



Cap ø 33mm



Light output 360°

T5 HFI STICK-LITE

INTEGRAL ECG



Suspended/Surface mounted. Linear diffused fluorescent light with white or black end caps.

USED WIDELY WITHIN THE TV AND THEATRE INDUSTRY.

The T5 HFi Stick-Lite is a slim tubular design that can be surface mounted or suspended. The light can be used internally and offers 360° light distribution through its polycarbonate satin diffuser. The light seamlessly incorporates many colours with the use of our coloured filters.

The T5 HFi Stick-Lite is regularly used for window & shop displays, also used widely within the TV and theatre industry.

Light Source Information

- Integral ECG.
- Available in 3000K & 4000K.

Options

White & black end caps. 3m of cable supplied.

Dimming

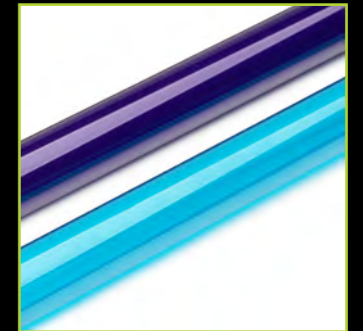
Not available.

Installation

Horizontal, vertical, angled suspension or surface mounted.

Optics

Satin polycarbonate diffuser. Can be used with DDP colours light red, light orange, ice blue, sky blue, chrome green, candy pink, pink & candlelight. Larger selection of colours available with our coloured filters.



DDP Colour Sleeves



Suspension Kit



Plastic Clamps

Cat No.	Length (mm)	Illuminated Length (mm)	Lumens	Circuit Power (W)
HFI T5 8W	475	260	423	11
HFI T5 14W	730	520	1130	18
HFI T5 21W	1030	820	1550	22
HFI T5 28W	1330	1120	1820	24

- For external use, please contact a member of the team.



Tube ø 25mm



Cap ø 28mm



Light output 360°



24V Twin Sticks



24V Twin Sticks



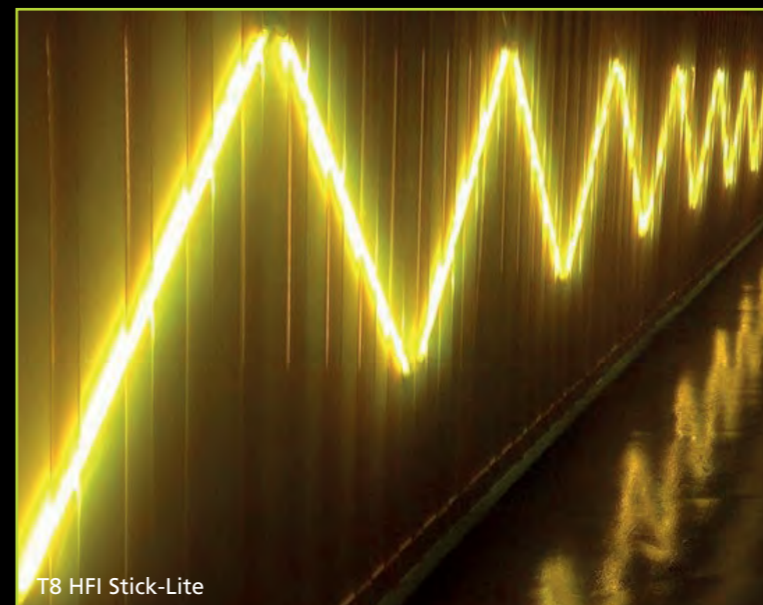
T8 HFI Stick-Lite



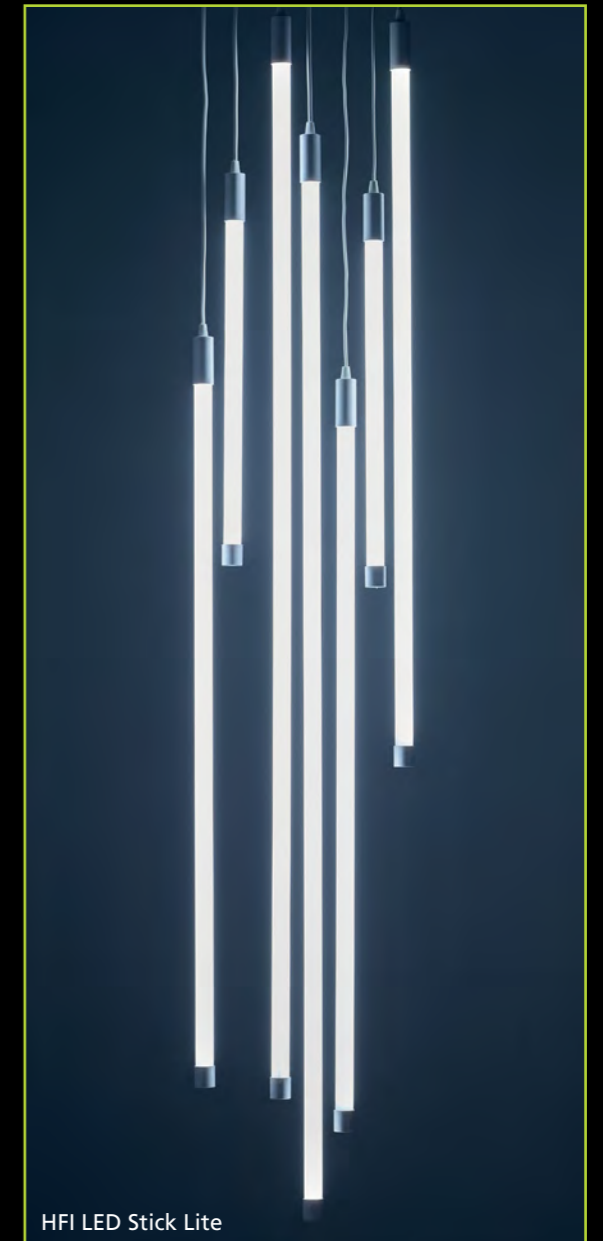
T8 HFI Stick-Lite



T8 HFI Stick-Lite



T8 HFI Stick-Lite



HFI LED Stick Lite





We have distributors in the following countries:

AUSTRALIA ● BELGIUM ● CHILE ● DENMARK ● DUBAI
FRANCE ● GERMANY ● GREECE ● ITALY ● MOROCCO
NETHERLANDS ● OMAN ● POLAND ● PORTUGAL ● SINGAPORE
SPAIN ● SWEDEN ● SWITZERLAND ● TURKEY ● UNITED KINGDOM

Unit 17 Chartwell Business Park Chartmoor Road Leighton Buzzard Bedfordshire LU7 4WG United Kingdom
Telephone: +44 1525 376 974 Email: reply@encapsulite.co.uk www.encapsulite.co.uk